

## SOC MPEG Codec Evaluation Kits

### Product Description

SOC provides evaluation kits for evaluating the MPEG codec IP cores, modules, and chipsets. The evaluation kits can also be used as product development platforms. The kits include: FMC-MCM-1000, VTR-S1000, and VTR-4000C. Refer to the photos below.

The SOC OEM products, the VoIP-4K, VTR-I-8K, and VTR-X-8K, can also be used for evaluating the SOC codecs.

For evaluations, SOC pre-loads the firmware and I/O drivers for the evaluation kits and makes them plug-and-play before shipping, which make it very easy for the users to test the SOC MPEG IP cores, codec modules, or chipsets.

For product development uses, customers can license the firmware and I/O drivers, in netlist IP cores (such as the network stack) or I/O driver source codes, which allows the users to integrate the IPs into their products.

The design files of FMC-MCM-1000, VTR-S1000, and VTR-4000C boards are also available with a fee, which can significantly accelerate the user product design process.

### FMC-MCM-1000 Key Features

- Xilinx /LX150/LX100/LX75/LX45 FPGA
- 2 GB DDR3 RAM
- FMC male and female connectors
- SODIMM connector for SOC MPEG Codec Modules
- HDMI input and output
- Tri-Speed Ethernet (10/100/1000Mbps)
- Plug-and-Play

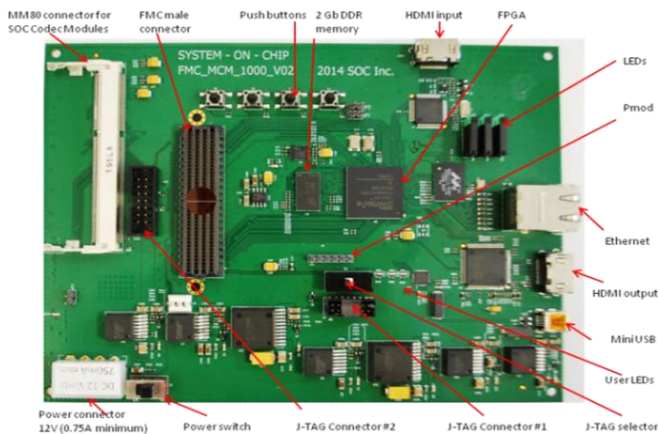
### VTR-S1000 Key Features

- Xilinx LX45T FPGA
- 2 GB DDR3 RAM
- One connector for SOC MPEG Codec Modules
- HDMI input and output
- 3G HD-SDI inputs or outputs
- Tri-Speed Ethernet (10/100/1000Mbps)
- Plug-and-Play

### VTR-4000C Key Features

- Xilinx Artix-7 XC7A200T FPGA
- One connector for SOC MPEG Codec Modules
- Two HDMI input ports
- One HDMI output
- Four 3G HD-SDI ports for either inputs or outputs
- Two connectors for WiFi modules
- Tri-Speed Ethernet (10/100/1000Mbps)
- Plug-and-Play

FMC-MCM-1000 Top View



VTR-S1000 top View



VTR-4000C Top View

